

# CONTEMPORARY



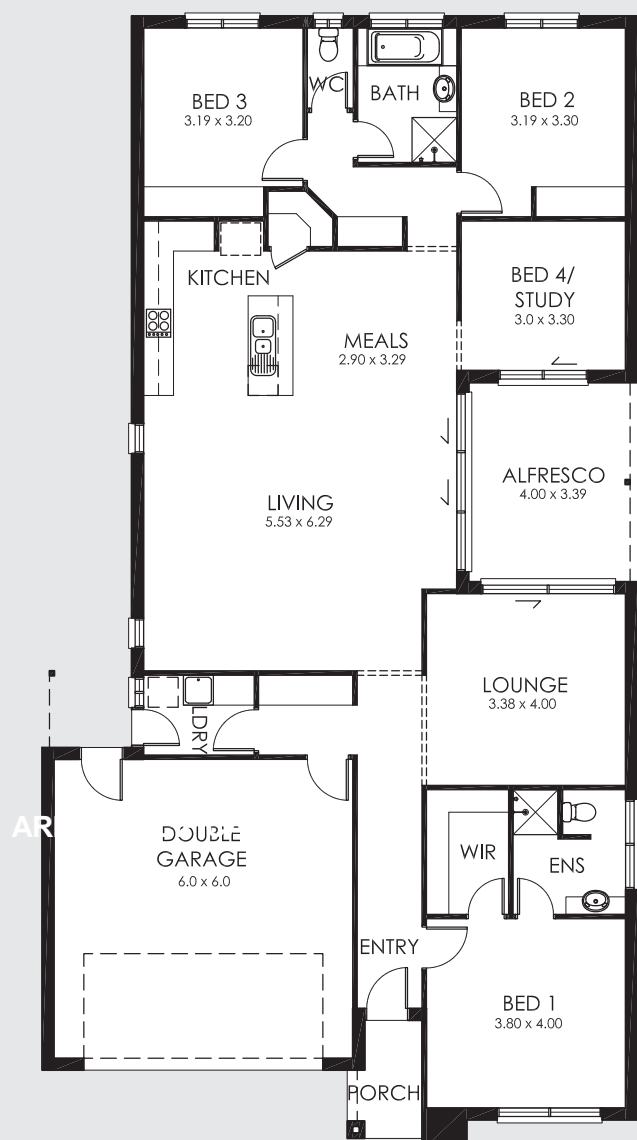
## FEATURES

- 4 Bedrooms
- Large Kitchen / Living / Dining Area
- Double Lock-Up Garage
- Great Outdoor Alfresco
- Ensuite & WIR
- Separate Lounge

## AREA SPECIFICATIONS

Living Area	171.91m <sup>2</sup>
Garage	39.36m <sup>2</sup>
Porch	3.43m <sup>2</sup>
Alfresco	13.56m <sup>2</sup>
<b>TOTAL</b>	<b>233.81m<sup>2</sup></b>

Width 11.96m and Depth 22.69m



**PCR**  
**Building**  
**Services**

**PTY. LTD.** NARRANDERA  
PHONE: 02 6959 1957